



APDR - PHASE 2

ALEXIS PARK DR & 43 AVE ROUNDABOUT

OLD KAMLOOPS RD TO 35 ST

RE-ISSUED FOR QUOTATION & REVIEW

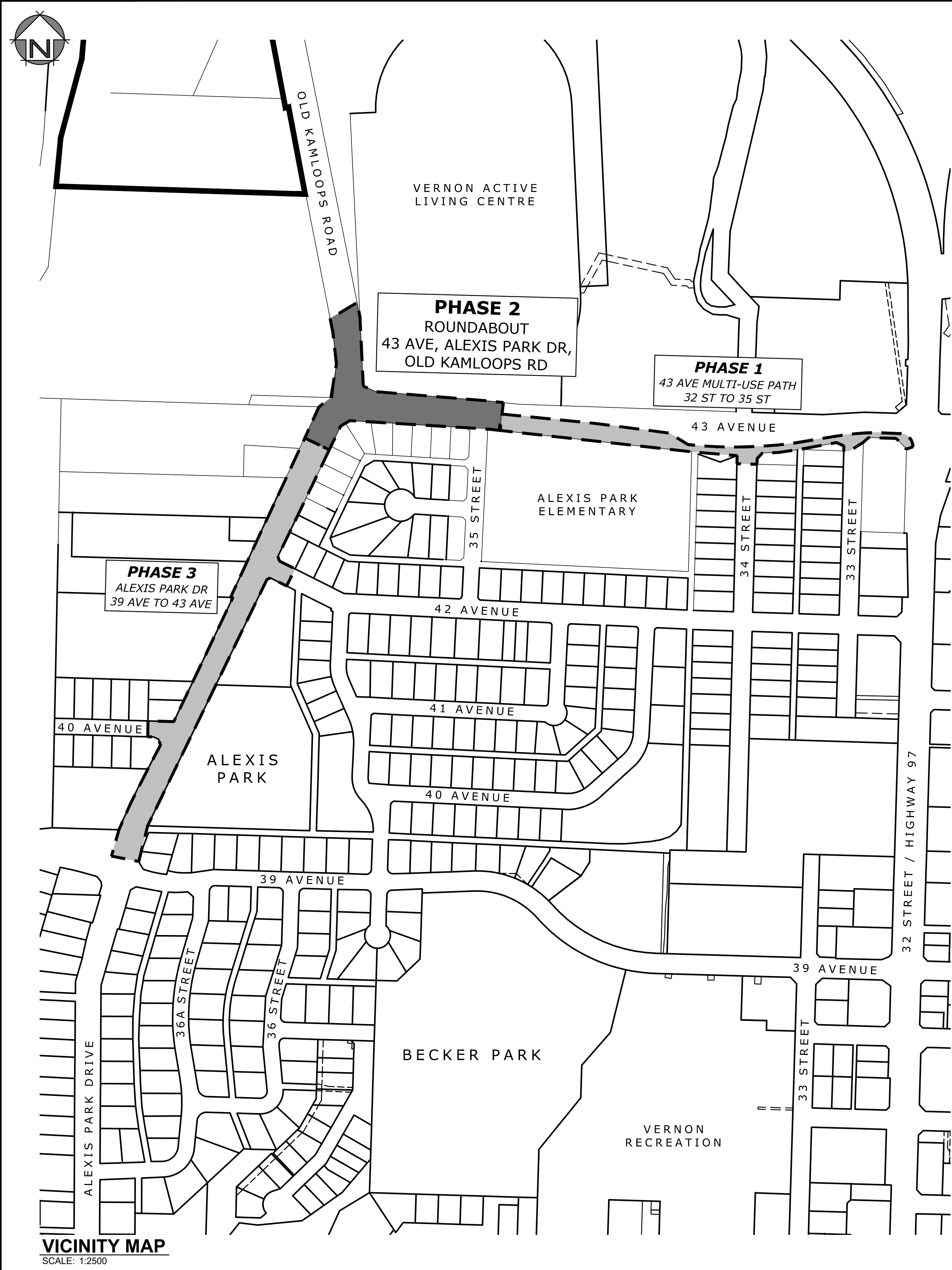
25-48-INF



3710B 28th Street,
Vernon, BC, V1T 9X2

Ph: (250) 503-1023
Fax: (250) 503-1024

USER: caseyb
CTB: mscd-fulblack.ctb
LAYOUT: C001
PLOTTED: 2025-12-16 - 4:26 PM
XREFS: 3027-CAD.dwg 3027-VALC Onsite.dwg 3027-LEGL-E.dwg 3027-03-PLNM-N.dwg 3027-03-PLNM-E.dwg 3027-03-DSGN-N.dwg 3027-02-PLNM-N.dwg 3027-04-PLNM-N.dwg
IMAGES:
FILE: z:\mead projects\3027_03 - ph2 - apdr & mup roundabout at 43rd ave\Drawings\ sheets\3027_03-plans (phase 2).dwg



VICINITY MAP
SCALE: 1:2500

DRAWING INDEX:

No.	DESCRIPTION
C000	COVER SHEET
C001	VICINITY PLAN, GENERAL NOTES & DRAWING INDEX
C100	OVERALL SURFACE WORKS AND UTILITY PLANS
C101	PAVEMENT MARKINGS & SIGNAGE PLAN
C102	PAVEMENT MARKINGS & SIGNAGE PLAN
C103	COMPOSITE UTILITY PLAN
C104	REMOVALS PLAN
C105	REMOVALS PLAN
C200	ROADWORKS PLAN & PROFILE - ALEXIS PARK DR
C201	ROADWORKS PLAN & PROFILE - OLD KAMLOOPS RD
C202	ROADWORKS PLAN & PROFILE - 43 AVE - STA. 43+000 TO 43+140
C203	ROADWORKS PLAN & PROFILE - 43 AVE & 35 ST - STA. 43+140 TO 43+200 & 35 ST
C204	ROADWORKS PLAN & PROFILE - 4240 ALEXIS PARK DR ACCESS AND SLOPE
C300	SANITARY PLAN & PROFILE - ALEXIS PARK DR, 35 ST, & 4240 SERVICE
C301	SANITARY AND STORM PLAN & PROFILE - 43 AVE
C302	STORM PLAN & PROFILE - ALEXIS PARK DR & OLD KAMLOOPS RD
C400	WATER PLAN & PROFILE - ALEXIS PARK DR
C401	WATER PLAN & PROFILE - 43 AVE
C402	IRRIGATION SUPPLY PLAN & PROFILE - ALEXIS PARK DR & OLD KAMLOOPS RD
C500	TYPICAL SECTIONS
C501	DETAILS
C600	TRAFFIC MANAGEMENT REFERENCE PLAN
C601	WATER TESTING AND RETURN TO SERVICE PLAN
E-01	ALEXIS PARK DR AND 43 AVE ROUNDABOUT - OLD KAMLOOPS ROAD - TO 35 ST
E-02	TRAFFIC SIGNAL - 43 AVENUE AT 35 STREET
E-03	TRAFFIC SIGNAL - 43 AVENUE AT 35 STREET
	IRRIGATION PLANS
	LANDSCAPE PLANS

GENERAL NOTES:

- ALL CONSTRUCTION AND MATERIALS TO BE IN ACCORDANCE WITH THE CITY OF VERNON, GREATER VERNON WATER (GVW), AND MMCD STANDARD SPECIFICATIONS AND DRAWINGS UNLESS OTHERWISE NOTED.
- WHEN A CONFLICT BETWEEN THE SPECIFICATIONS ARISES, THE MOST STRINGENT SHALL APPLY.
- OBTAIN A PERMIT TO CONSTRUCT WORKS ON A MUNICIPAL RIGHT OF WAY FROM THE CITY OF VERNON ENGINEERING DEPARTMENT 48 HOURS PRIOR TO THE START OF ANY CONSTRUCTION.
- CONTRACTOR TO LOCATE ANY AND ALL EXISTING UTILITIES PER LATEST WORKSAFE BC, CITY OF VERNON, GVW, AND/OR UTILITY PROVIDER GUIDELINES AND REGULATIONS.
- LOCATION AND OFFSETS OF EXISTING UTILITIES SHOWN ON THESE PLANS ARE COMPILED FROM THE MOST RECENT INFORMATION AVAILABLE, BUT ARE NOT GUARANTEED TO BE COMPLETE OR ACCURATE AND MUST BE VERIFIED BY THE CONTRACTOR PRIOR TO CONSTRUCTION. ANY DAMAGE TO AN EXISTING UTILITY AS A RESULT OF CONSTRUCTION WILL BE THE SOLE RESPONSIBILITY OF THE CONTRACTOR.
- EXPOSE ALL EXISTING SERVICES AT CONNECTION AND CROSSING POINTS 48 HOURS PRIOR TO STARTING CONSTRUCTION ON ANY SUCH SERVICES. ADVISE ENGINEER OF ANY CONFLICTS.
- EXPOSE ALL UTILITY TIE-INS PRIOR TO INSTALLATION OF PIPEWORKS.
- DO NOT START ANY BACKFILL OPERATION UNTIL THE WORKS HAVE BEEN INSPECTED BY THE ENGINEER.
- AFTER CONSTRUCTION, RESTORE WORK AREAS AND ALL EXISTING FEATURES TO THEIR ORIGINAL CONDITION OR BETTER
- MAINTAIN LOCAL VEHICULAR AND PEDESTRIAN ACCESS THROUGH CONSTRUCTION AREA DURING CONSTRUCTION, AS PER THE TRAFFIC REFERENCE PLAN.
- ADJUST ALL PROPOSED AND EXISTING APPURTENANCES TO MEET THE FINISHED GRADES.
- ENSURE THAT ALL EXISTING SERVICES REMAIN USABLE DURING CONSTRUCTION.
- REMOVE EXISTING ASPHALT CONSISTENT WITH THE LIMITS OF CONSTRUCTION SHOWN ON THE DRAWINGS AND AS NECESSARY TO COMPLETE THE WORK.
- OFFSETS SHOWN ARE FOR REFERENCE ONLY. DIGITAL LAYOUT WILL BE PROVIDED AT TIME OF CONSTRUCTION.
- REMOVE AND REINSTALL EXISTING SIGNAGE AS PER THE LATEST MUTCD STANDARD SPECIFICATIONS.

WATER

- ALL CONSTRUCTION AND MATERIALS TO BE IN ACCORDANCE WITH GVW STANDARD SPECIFICATIONS AND DRAWINGS UNLESS OTHERWISE NOTED.
- ALL WATER MAIN PIPE TO BE PVC DR18, AWWA STANDARD C900. PROVIDE 1.5m MINIMUM COVER.
- ALL WATER VALVES AND FITTINGS TO BE HUB x HUB, JOINT RESTRAINED AND HAVE CAST-IN-PLACE CONCRETE REACTION BLOCKS. FLANGED VALVES OR FITTINGS TO BE USED ONLY WITH PRIOR APPROVAL FROM THE CONTRACT ADMINISTRATOR.
- ALL METALLIC VALVES, FITTINGS, AND JOINT RESTRAINTS TO BE FULLY PROTECTED FROM CORROSION THROUGH THE USE OF DENSO PASTE AND TAPE OR APPROVED EQUAL.
- CONTRACTOR TO TEST, FLUSH AND CONNECT THE WATER MAINS UNDER THE SUPERVISION OF THE ENGINEER AND AS PER THE WATER TESTING AND RETURN TO SERVICE PLAN.
- WATER SERVICES TO BE MINIMUM 25Ø UNLESS OTHERWISE NOTED.
- ALL WATER SERVICES THAT ARE NOT PERPENDICULAR TO MAIN TO HAVE TRACER WIRE (#14 AWG) AND WIRE TO BE RUN TO SURFACE AT CURB STOP BOX.
- ALL EXISTING VALVES TO BE OPERATED BY CITY OF VERNON CREWS ONLY. CONTRACTOR NOT TO OPERATE ANY EXISTING VALVES.
- THE CONTRACTOR SHALL PROVIDE A MINIMUM 48 HOURS (2 WORKING DAYS, DEFINED AS MONDAY TO FRIDAY, EXCLUDING STATUTORY HOLIDAYS) ADVANCE NOTICE TO THE ENGINEER, GVW, CITY OF VERNON, VERNON FIRE DEPARTMENT, AND THE AFFECTED WATER SERVICE USERS PRIOR TO ANY MAIN AND/OR SERVICE SHUT DOWN OR DISRUPTION. NO SHUTDOWNS OF GREATER THAN 8 HOURS WILL BE ALLOWED. THE CONTRACTOR SHALL COORDINATE ALL SERVICE DISRUPTIONS WITH THE ENGINEER, GVW, CITY OF VERNON AND VERNON FIRE DEPARTMENT.
- IRRIGATION MAIN IS NON-POTABLE, REQUIRING ONLY FLUSHING AND PRESSURE TESTING.

STORM SEWER

- STORM SEWER SERVICES TO BE 150Ø PVC SDR 28 @ MINIMUM 1.0% UNLESS OTHERWISE NOTED.
- CATCH BASIN LEADS TO BE 200Ø PVC SDR 35 @ MINIMUM 1.0%.
- CATCH BASINS ARE TOP INLET UNLESS OTHERWISE NOTED.
- CATCH BASIN FRAME AND GRATES TO BE DOBNEY B-39 FOR BARRIER CURB WITH GUTTER.
- TOP INLET CATCH BASIN BARRELS TO BE MINIMUM 750Ø DIAMETER.
- SIDE INLET CATCH BASIN BARRELS TO BE 900Ø DIAMETER.
- CATCH BASIN BARRELS WITHIN 3.0m OF WATERMAIN TO BE WATERTIGHT AND LEADS TO BE BE GROUTED.

SANITARY SEWER

- SANITARY SEWER MAIN TO BE 200Ø PVC SDR 35.
- SANITARY SEWER SERVICES TO BE 100Ø PVC SDR 28 @ MINIMUM 2.0% UNLESS OTHERWISE NOTED.

HYDRO, TELEPHONES, CABLE, STREETLIGHTING AND GAS

- COMPLETE "BC ONE CALL" AT 1-800-474-6886 AND CONTACT ANY OTHER APPLICABLE UTILITY A MINIMUM OF 48 HOURS PRIOR TO START OF CONSTRUCTION.

D	2025-DEC-17	CFB	RE-ISSUED FOR QUOTATION & REVIEW	
C	2025-JUL-22	CFB	ISSUED FOR 1H PERMIT	
B	2025-JUL-14	CFB	ISSUED FOR RFP	
A	2025-JUN-04	CFB	PRELIMINARY DESIGN	
Rev.	Date	By	Description	



3710B 28th Street, Vernon, BC, V1T 9X2
Ph: (250) 503-1023
Fax: (250) 503-1024

Seal

Scale	AS NOTED
Date	MAR 2025
Designed	CH/CFB
Drawn	CFB
Checked	CH

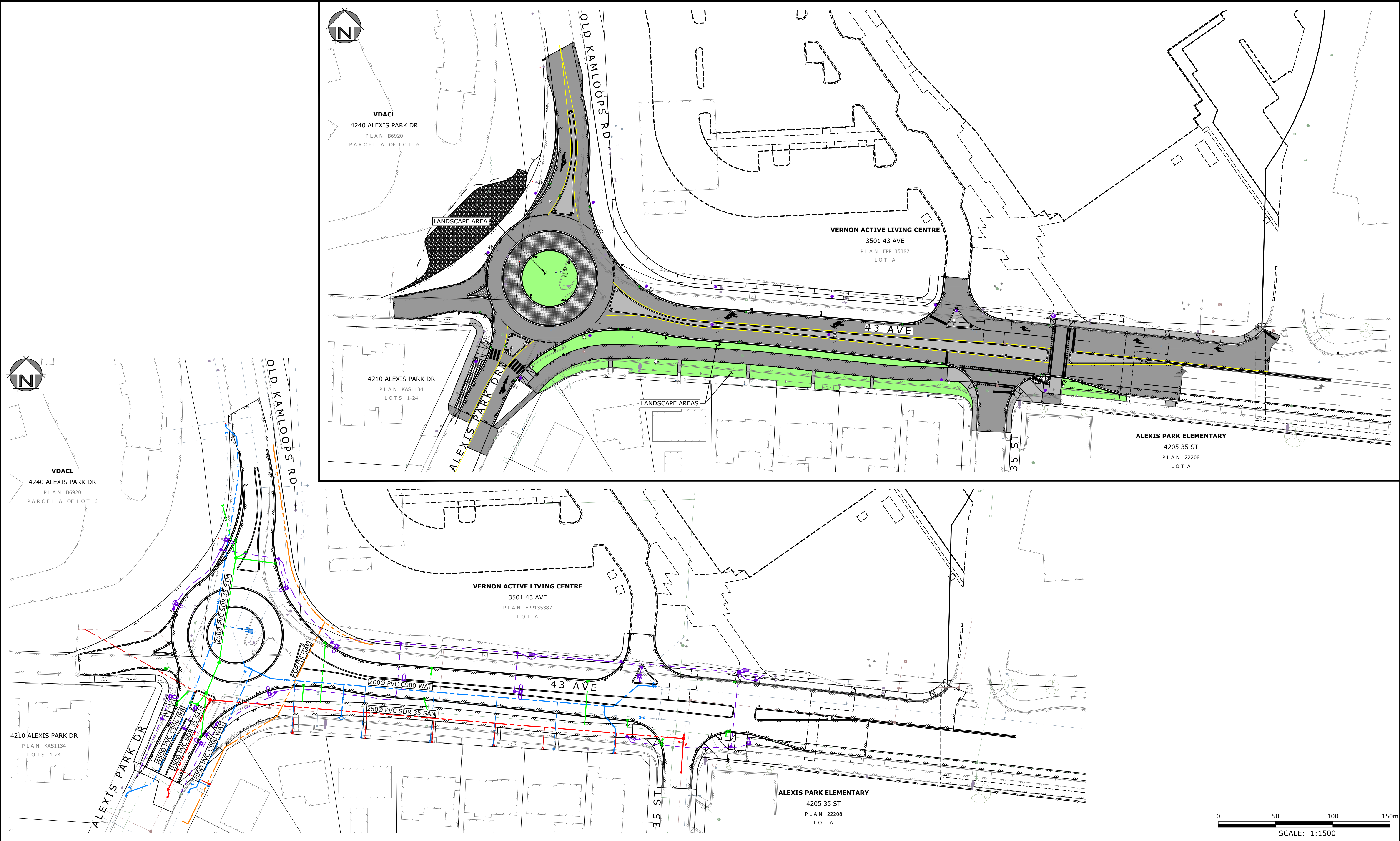


CITY OF VERNON & RDNO

ALEXIS PARK DR & 43 AVE ROUNDABOUT
VICINITY PLAN, GENERAL NOTES
& DRAWING INDEX

Project No.	3027.03
Client File No.	25-48-INF
Sheet No.	1 OF 22
Drawing No.	C001
Rev.	D

USER: caseyb
CTB: mscad-pantolcolour.ctb
LAYOUT: C100
XREFS: 3027-CAD.dwg 3027-VALC Onsite.dwg 3027-LEGL-E.dwg 3027-03-PLNM-N.dwg 3027-03-PLNM-E.dwg 3027-03-PLNM-N.dwg 3027-04-PLNM-N.dwg
IMAGES: FILE: 2\\mead\\projects\\3027_03 - rdno - apdr & mup roundabout at 43rd ave\\drawings\\sheets\\3027_03-plans (phase 2).dwg



Rev.	Date	By	Description
D	2025-DEC-17	CFB	RE-ISSUED FOR QUOTATION & REVIEW
C	2025-JUL-22	CFB	ISSUED FOR 1H PERMIT
B	2025-JUL-14	CFB	ISSUED FOR RFP
A	2025-JUN-04	CFB	PRELIMINARY DESIGN

LEGEND:	(EXISTING SYMBOLS SHOWN GREY/SOLID)
	- EDGE OF ASPHALT
	- EDGE OF GRAVEL
	- FENCING
	- BUILDING
	- TOP OF BANK
	- BOTTOM OF BANK
	- DITCH
	- TREELINE
	- SANITARY STORM DRAIN
	- WATER
	- GAS
	- HYDRO/TEL
	- GUY WIRE
	- ANCHOR POLE
	- HYDRO/TEL POLE
	- POLE W/ TRANSFORMER
	- SHAW CABLE TUB/VAULT
	- JUNCTION BOX
	- SERVICE BOX
	- KIOSK
	- LOW POWER TRANSFORMER
	- TRAFFIC SIGNAL
	- STREET LIGHT
	- CAP
	- INSPECTION CHAMBER
	- SANITARY MANHOLE
	- DRAINAGE MANHOLE
	- DRY WELL
	- CATCH BASIN MANHOLE
	- CATCH BASIN
	- DRAINAGE INVERT
	- HEADWALL
	- AIR VALVE
	- WATER VALVE
	- CURB STOP
	- FIRE HYDRANT
	- BLOW-OFF
	- REDUCER
	- COUPLER
	- PROPERTY PIN
	- HUB
	- MONUMENT
	- BOREHOLE
	- SIGN
	- TREE

EGBC PERMIT TO PRACTICE No. 1001446

MONAGHAN
ENGINEERING & CONSULTING LTD.

3710B 28th Street,
Vernon, BC, V1T 9X2

Ph: (250) 503-1023
Fax: (250) 503-1024

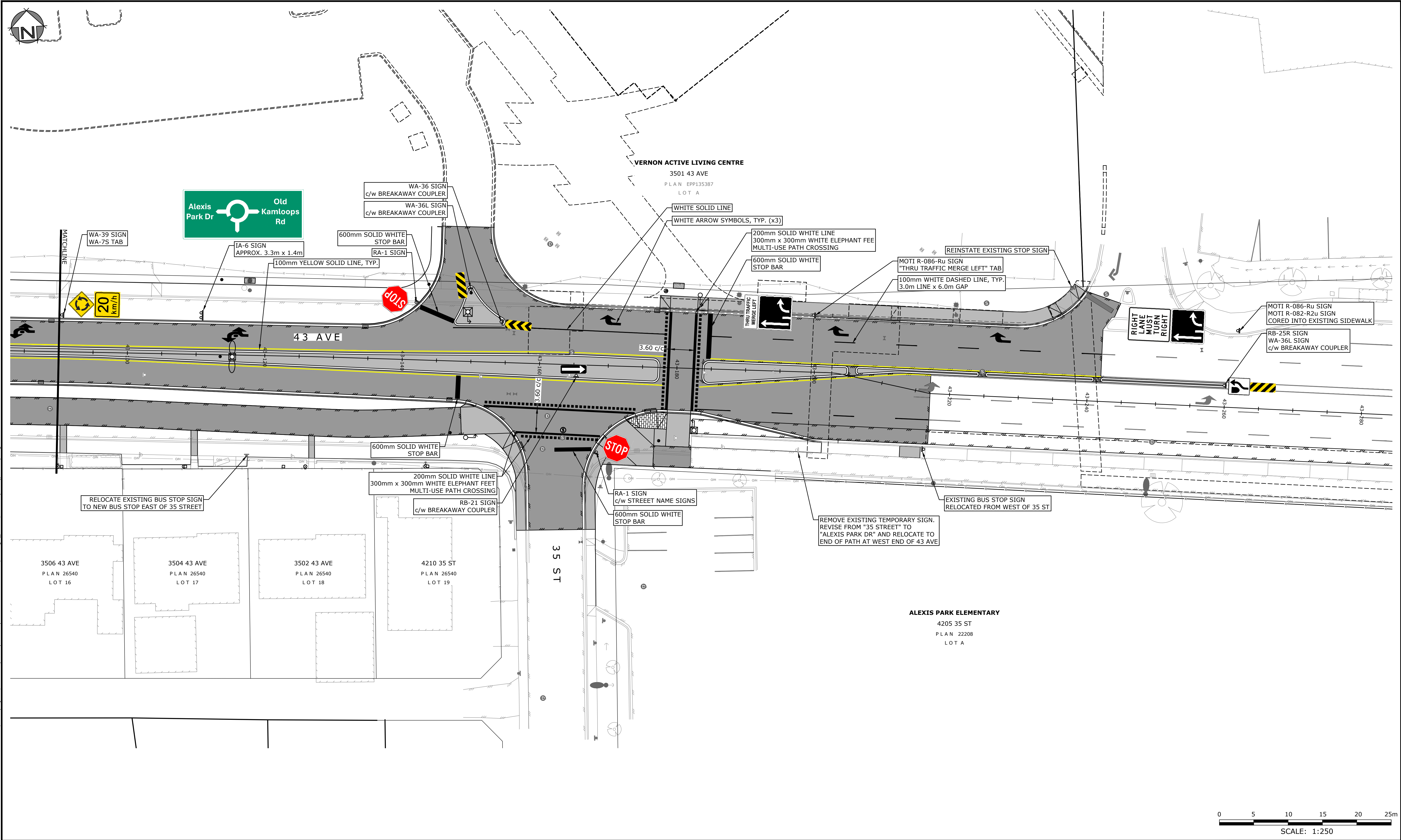
Scale	1:500
Date	MAR 2025
Designed	CH/CFB
Drawn	CFB
Checked	CH

CITY OF VERNON

REGIONAL DISTRICT NORTH OKANAGAN

CITY OF VERNON & RDNO		Project No.	3027.03
ALEXIS PARK DR & 43 AVE ROUNDABOUT		Client File No.	25-48-INF
OVERALL SURFACE WORKS		Sheet No.	2 OF 22
AND UTILITY PLANS		Drawing No.	C100
		Rev.	D

USER: caseyp
CTB: mscd-fuillblack.ctb
LAYOUT: C102
PLOTTED: 2025-12-16 - 4:28 PM
XREFS: 3027-CAD.dwg 3027-VALC Onsite.dwg 3027-LEGL-E.dwg 3027-03-PLNM-N.dwg 3027-03-05GN-N.dwg 3027-02-PLNM-N.dwg 3027-04-PLNM-N.dwg
IMAGES
FILE: 23mead projects\3027_03 - ph2 - apdr & mup roundabout at 43rd ave\Drawings\Sheets\3027_03-plans (phase 2).dwg



Rev.	Date	By	Description
C	2025-DEC-17	CFB	RE-ISSUED FOR QUOTATION & REVIEW
B	2025-JUL-14	CFB	ISSUED FOR RFP
A	2025-JUN-04	CFB	PRELIMINARY DESIGN

LEGEND:	(EXISTING SYMBOLS SHOWN GREY/SOLID)
	- EDGE OF ASPHALT
	- EDGE OF GRAVEL
	- FENCING
	- BUILDING
	- TOP OF BANK
	- BOTTOM OF BANK
	- DITCH
	- TREELINE
	- SANITARY
	- STORM DRAIN
	- WATER
	- GAS
	- HYDRO/TEL
	- GUY WIRE
	- ANCHOR POLE
	- HYDRO/TEL POLE
	- POLE w/ TRANSFORMER
	- HYDRO TUB/VAULT
	- TEL TUB/VAULT
	- SHAW CABLE TUB/VAULT
	- JUNCTION BOX
	- SERVICE BOX
	- KIOSK
	- LOW POWER TRANSFORMER
	- TRAFFIC SIGNAL
	- STREET LIGHT
	- CAP
	- INSPECTION CHAMBER
	- SANITARY MANHOLE
	- DRY WELL
	- CATCHBASIN MANHOLE
	- CATCHBASIN
	- DRAINAGE INVERT
	- HEADWALL
	- AIR VALVE
	- WATER VALVE
	- CURB STOP
	- FIRE HYDRANT
	- BLOW-OFF
	- REDUCER
	- COUPLER
	- PROPERTY PIN
	- HUB
	- MONUMENT
	- BOREHOLE
	- SIGN
	- TREE

EGBC PERMIT TO PRACTICE No. 1001446

MONAGHAN
ENGINEERING & CONSULTING LTD.

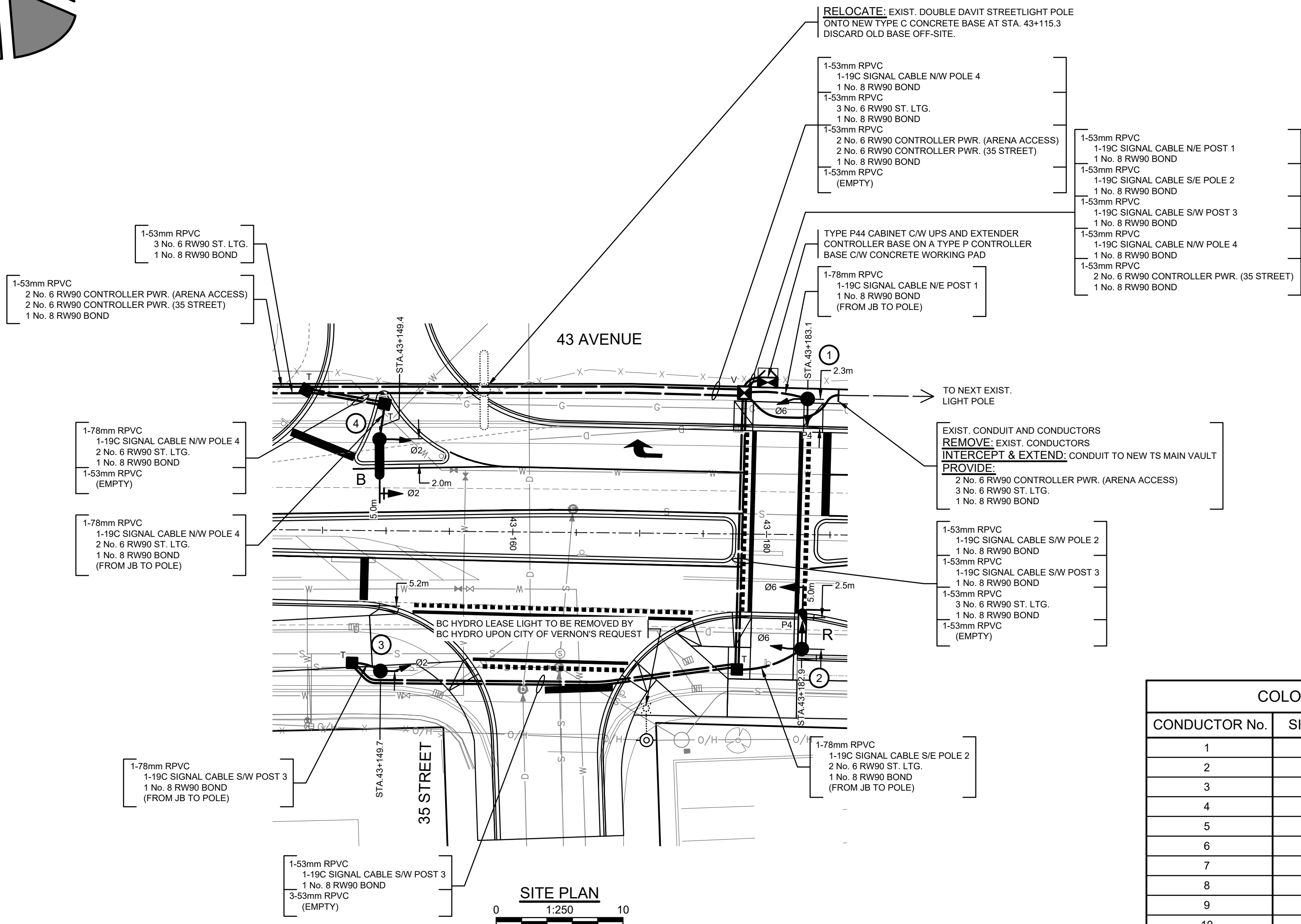
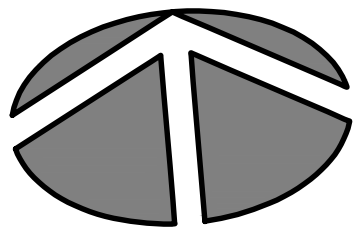
3710B 28th Street, Vernon, BC, V1T 9X2 Ph: (250) 503-1023 Fax: (250) 503-1024

Scale	1:250
Date	MAR 2025
Designed	CH/CFB
Drawn	CFB
Checked	CH

CITY OF VERNON

REGIONAL DISTRICT NORTH OKANAGAN

CITY OF VERNON & RDNO		Project No.	3027.03
ALEXIS PARK DR & 43 AVE ROUNDABOUT		Client File No.	25-48-INF
PAVEMENT MARKINGS		Sheet No.	4 OF 22
& SIGNAGE PLAN		Drawing No.	C102
		Rev.	C



LEGEND

- PROPOSED COMBINATION TRAFFIC SIGNAL POLE
- PROPOSED TRAFFIC SIGNAL POST
- POLE NUMBER
- PROPOSED LARGE ROUND PLASTIC JUNCTION BOX 2 SECTIONS DEEP C/W BONDED GALVANIZED STEEL LID AND SECURITY BOLT
- PROPOSED TRAFFIC SIGNAL MAIN VAULT C/W GALVANIZED STEEL LID LABELED 'VERTS' AND SECURITY BOLT
- VEHICLE PHASE
- PEDESTRIAN PHASE
- LIGHTING ON RED PHASE CONDUCTOR
- LIGHTING ON BLACK PHASE CONDUCTOR
- PROPOSED CONDUIT AND CONDUCTORS
- EXISTING CONDUIT AND CONDUCTORS

NOTES

- ALL WORK SHALL BE CONSTRUCTED IN ACCORDANCE WITH THE 2009 MASTER MUNICIPAL CONSTRUCTION DOCUMENT, SUPPLEMENTAL SPECIFICATIONS ISSUED WITH THIS CONTRACT (IF ANY) AND THESE DRAWINGS.
- ALL COMMON CIRCUIT WIRING SHALL BE TAGGED & TY-RAPPED AS DETAILED IN THE MMCD.
- ALL SIGNAL HEAD SECTIONS SHALL BE WIRED SEPARATELY FROM THE BASE OF THE POLE, INCLUDING A SEPARATE NEUTRAL AND BOND FOR EACH SIGNAL HEAD.
- ALL SINGLE CONDUCTORS SHALL BE STRANDED COPPER, TYPE RW90 INSULATED AND COLOUR CODED.
- CONDUCTORS INSIDE POLES SHALL BE:
 - No.14 RW90 X-LINK FOR SIGNALS
 - No.12 RW90 X-LINK FOR ALL OTHER CONDUCTORS
 - No. 8 RW90 BOND
- EXACT POSITION AND ELEVATION OF ALL EQUIPMENT SHALL BE LAYED OUT BY THE CONTRACTOR AND REVIEWED BY CONTRACT ADMINISTRATOR IN THE FIELD BEFORE CONSTRUCTION.
- CONTRACTOR SHALL PROVIDE ALL SURVEY LAYOUT.
- ALL SIGNAL HARDWARE TO BE MOUNTED WITH BOLTS. HOLES SHALL BE DRILLED, TAPPED AND SPRAYED WITH GALVANIZING COMPOUND. ALL MOUNTING BOLTS TO BE COATED WITH SILVER GRADE ANTI-SEIZE COMPOUND. THIS INCLUDES BOLTS FOR JUNCTION BOXES.
- DO NOT USE THIS DRAWING FOR PAVEMENT MARKINGS.
- THERE SHALL BE NO SPLICING OF CABLES IN JUNCTION BOXES, EXCEPT FOR STREET LIGHTING AND BOND WIRES.
- ALL SIGNAL CONDUCTOR SPLICES SHALL BE MADE IN POLE HANDHOLES.
- CONDUITS AND SIGNAL POLE BASE SHALL BE INSTALLED TO SUIT ULTIMATE GRADE.
- ALL CONDUITS ENTERING A JUNCTION BOX SHALL HAVE BELL ENDS.
- ALL SPLICES BELOW GRADE SHALL BE BLACKBURN OR TECHSPAN INSULATED/WATERPROOF LUG CONNECTORS WITH APPROPRIATE WIRE SIZE FOR THE REQUIRED INSTALLATION.
- NO IMAGE SENSOR CABLE SHALL BE SPLICED. THEY MUST TERMINATE AT THE CAMERA AND IN THE CONTROLLER CABINET ONLY.
- ALL WIRE COUNTS SHALL INCLUDE No. 8 RW90 CONTINUOUS BOND CONDUCTOR
- SEE B.C. HYDRO REGULATIONS FOR SERVICE CONNECTION DETAILS.
- CONTRACTOR TO ARRANGE FOR EXACT SERVICE LOCATION WITH B.C. HYDRO PRIOR TO COMMENCING CONSTRUCTION.
- PROVIDE HYDRO TWINE PULL STRING IN ALL EMPTY CONDUITS.
- ALL RPVC STUB OUTS REQUIRE AN ELECTRICAL RED MARKER BALL PLACED AT THE END OF THE STUB.
- P44 CABINET AND METERED KIOSK TO BE WRAPPED WITH DESIGN APPROVED BY THE CITY OF VERNON.

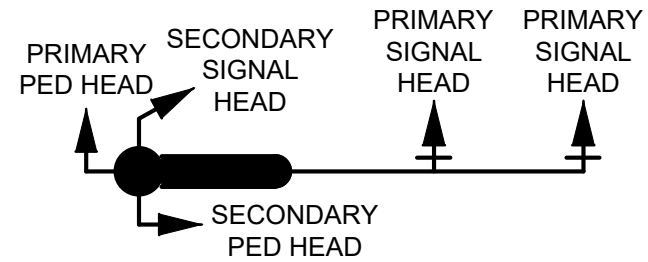
COLOUR CODING (19 CONDUCTOR SIGNAL CABLE)			
CONDUCTOR No.	SIGNAL ASSIGNMENT	LETTERING	CONDUCTOR COLOUR
1	NEUTRAL	WHITE ONE	WHITE
2	PRIMARY PB RETURN	WHITE TWO	WHITE
3	PRIMARY PB	-	BLACK
4	SECONDARY PB	-	ORANGE
5	PRIMARY RED	RED ONE	RED
6	SECONDARY RED	RED TWO	RED
7	THIRD RED	RED THREE	RED
8	PRIMARY PED DW	RED FOUR	RED
9	SECONDARY PED DW	RED FIVE	RED
10	PRIMARY AMBER	AMBER ONE	YELLOW
11	SECONDARY AMBER	AMBER TWO	YELLOW
12	PRIMARY LT AMBER	AMBER THREE	YELLOW
13	SECONDARY LT AMBER	AMBER FOUR	YELLOW
14	SECONDARY PED WALK	AMBER FIVE	YELLOW
15	PRIMARY GREEN	GREEN ONE	BLUE
16	SECONDARY GREEN	GREEN TWO	BLUE
17	PRIMARY LT GREEN	GREEN THREE	BLUE
18	SECONDARY LT GREEN	GREEN FOUR	BLUE
19	PRIMARY PED WALK	GREEN FIVE	BLUE

CONDUCTOR COLOUR CODE (HANDHOLE TO SIGNAL HEADS)		
ITEM	SIGNAL SECTION	CONDUCTOR COLOUR
Ø2	RED YELLOW GREEN	RED YELLOW BLUE
Ø6	RED YELLOW GREEN	RED YELLOW (RED T.T.) BLUE
P4	DON'T WALK WALK PUSH BUTTON	BROWN BLUE PURPLE/PURPLE (BROWN T.T.)

ITEM	CIRCUITS	CONDUCTOR COLOUR
SIGNAL NEUTRAL	NEUTRAL	WHITE
STREET LIGHTING LUMINAIRES	B R	BLACK RED
TRAFFIC CONTROLLER	POWER	BLACK
PHOTOCELL	POWER SWITCH LEG	BLACK RED
PANEL SUPPLY	POWER POWER	BLACK RED
NEUTRAL	NEUTRAL	WHITE
GROUND/BOND	GROUND/BOND	GREEN

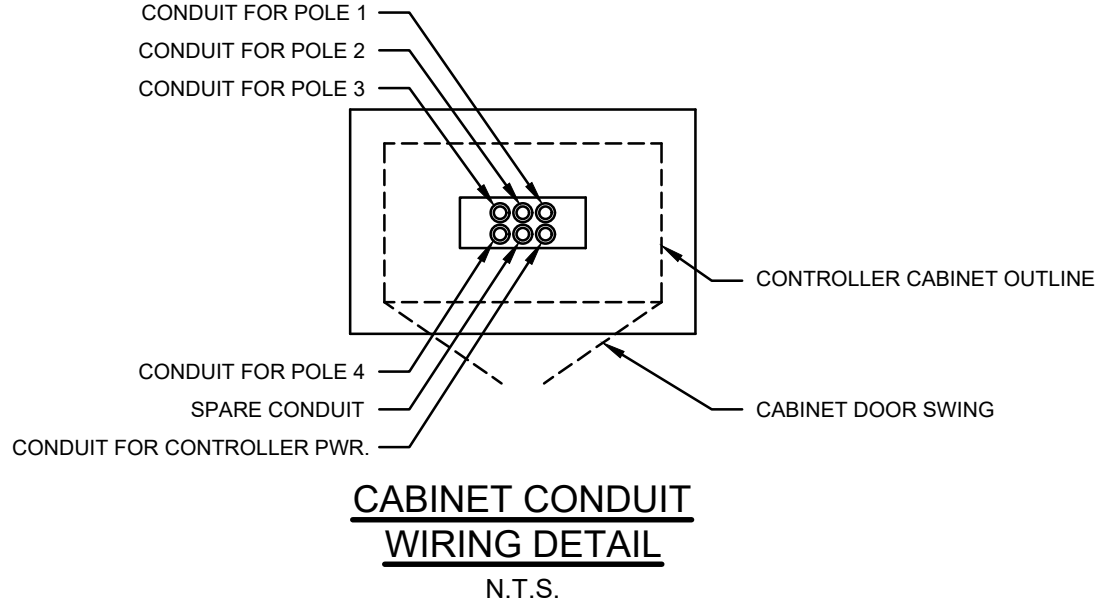
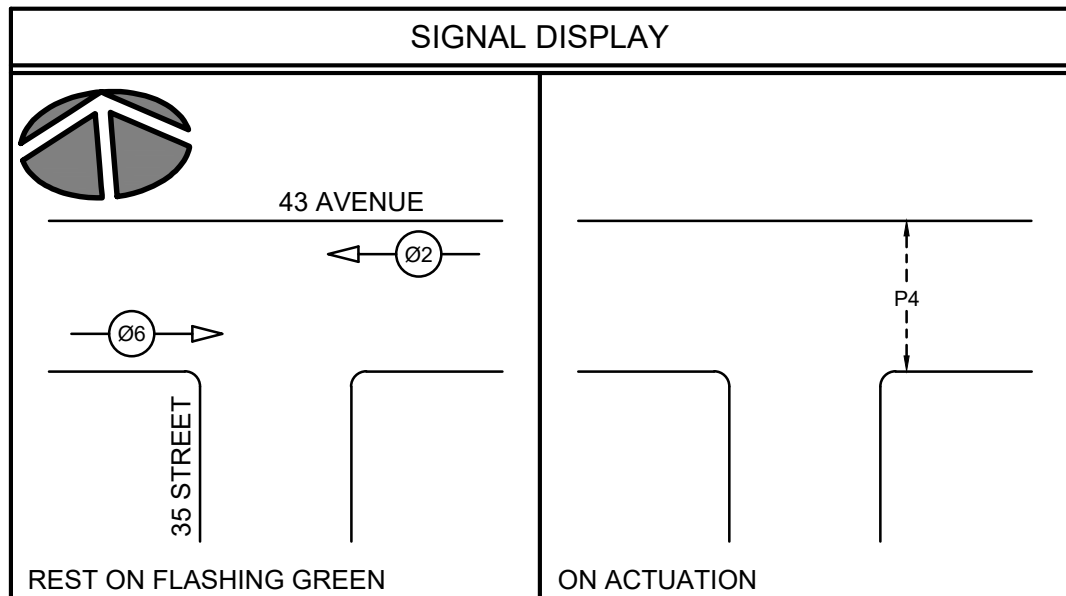
NOTE: T.T. DENOTES TAPE TRACER.

LT = LEFT TURN SIGNAL
DW = DON'T WALK
PB = PEDESTRIAN PUSHBUTTON



SIGNAL CABLE NOTES

- REFER TO CONTRACT DRAWINGS AND SECTION 16550 FOR DETAILED SPECIFICATIONS.
- CABLE TO BE POLYETHYLENE INSULATED POLYVINYL CHLORIDE JACKETED, RATED AT 600 VOLTS.
- CONDUCTORS TO BE No.14 AWG STRANDED.
- REFERENCE TO CSA 22.2 - No. 239-97



EXISTING STREET LIGHTING SHALL REMAIN IN OPERATION THROUGHOUT CONSTRUCTION.

ALL EQUIPMENT IS NEW EXCEPT WHERE NOTED

NOT FOR CONSTRUCTION
2025-12-09

OVERHEAD POWER LINE CONFLICTS

CONTRACTOR SHALL CONFIRM ON SITE PRIOR TO CONSTRUCTION THAT POLES & EQUIPMENT WILL MEET WorkSafeBC CLEARANCE REQUIREMENTS FOR OVERHEAD PRIMARY AND SECONDARY LINES. CONTRACTOR TO REPORT ANY CONFLICTS OR DISCREPANCIES TO DMD & ASSOCIATES PRIOR TO ORDERING POLES AND INSTALLING CONCRETE BASES.

CHECK BEFORE YOU DIG

CONTRACTOR SHALL REFER TO MUNICIPAL RECORD / CIVIL DESIGN DRAWINGS FOR ALL OTHER UTILITIES, SERVICE LOCATIONS, AND DETAILS. THE EXACT LOCATION OF THESE UTILITIES SHALL BE DETERMINED ON SITE BY THE CONTRACTOR. CONTRACTOR TO REPORT ANY CONFLICTS OR DISCREPANCIES TO DMD & ASSOCIATES PRIOR TO ORDERING BASES.

LOCATING EQUIPMENT

FOR CLARITY CONDUITS, JUNCTION BOXES AND STREETLIGHT POLES MAY NOT BE SHOWN AT DESIGN OFFSETS. CONTRACTOR SHALL LOCATE ALL EQUIPMENT BASED ON STATIONS AND/OR OFFSETS AS NOTED AND SHALL NOT RELY ON COORDINATES OBTAINED FROM DMD DIGITAL DRAWINGS. CONTRACTOR TO REPORT ANY CONFLICTS OR DISCREPANCIES TO DMD & ASSOCIATES PRIOR TO ORDERING EQUIPMENT.

CAUTION!
EXCAVATION NEAR OVERHEAD UTILITY POLE

ANY UNDERGROUND EXCAVATION WITHIN SOIL FOUNDATION INTERACTION AREA REQUIRES TEMPORARY UTILITY POLE SUPPORT. REFER TO ES55 E3-04 GUIDE FOR CIVIL EXCAVATION NEAR DISTRIBUTION POLES FOR DETAILS. REFER TO BC HYDRO WORK ON WOOD POLES MANUAL (ON SAFEHUB) AND BC HYDRO 2017-1-F POLE HOLDING REQUIREMENTS FOR APPROVED TEMPORARY POLE SUPPORT METHODS. FOR MORE INFORMATION CONTACT workmethods@bchydro.com

No.	DATE	BY	CHK'D	REVISION	Monaghan Engineering and Consulting Ltd. 3710B - 28th Street, Vernon, BC V1T 9X2 & (250) 503-1023		
-	2025-07-14	ER	MC	ISSUED FOR RFP	APDR - PHASE 2 TRAFFIC SIGNAL 43 AVENUE AT 35 STREET VERNON, BC		
-	2025-12-09	ER	MC	RE-ISSUED FOR QUOTATION			
					PROJECT No.	8497B-25-02 of 03	
					SHEET No.	E-02	REVISION

