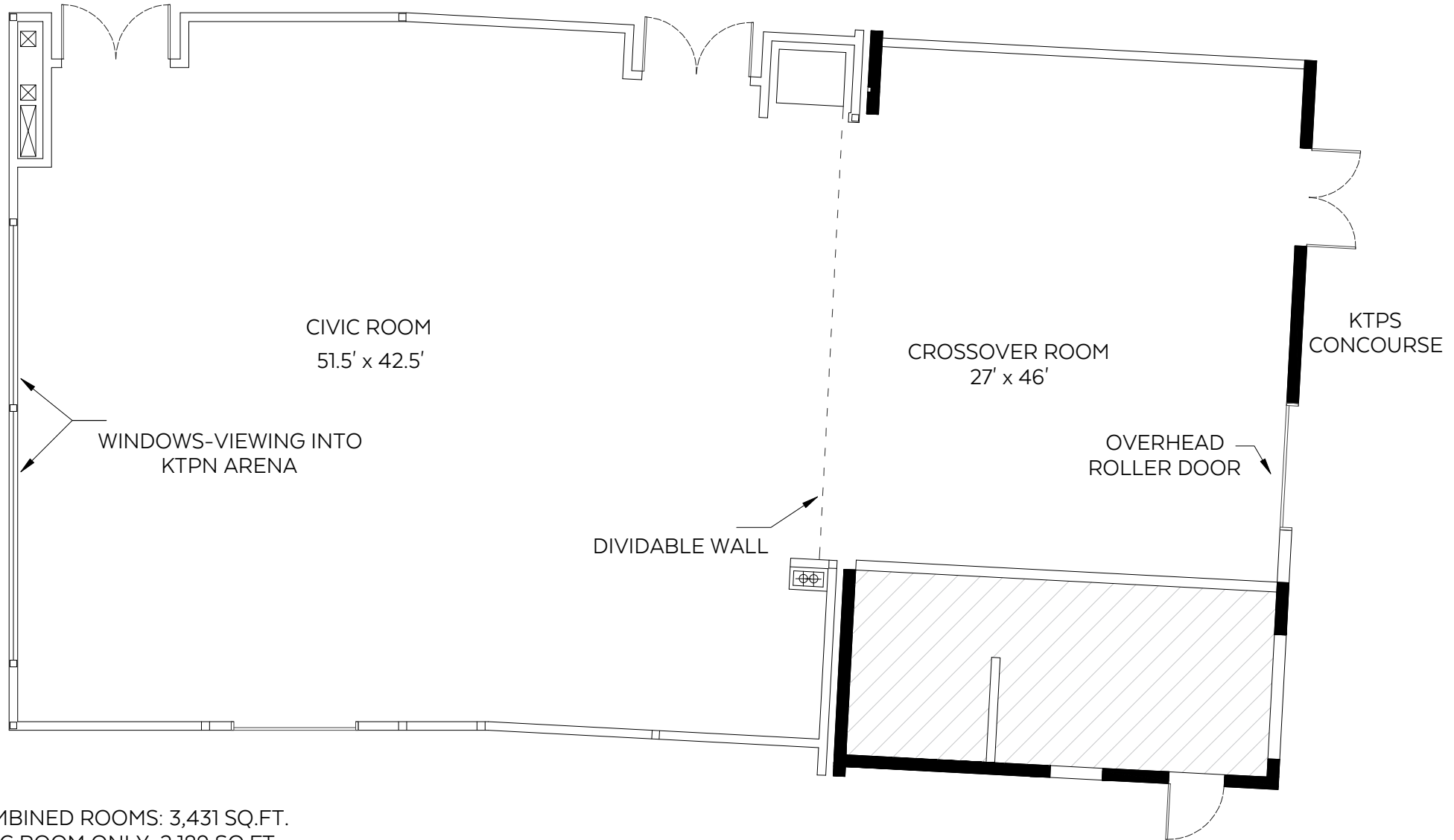


CIVIC & CROSSOVER ROOMS AT KAL TIRE PLACE

3445 43rd AVENUE, VERNON BC



COMBINED ROOMS: 3,431 SQ.FT.
CIVIC ROOM ONLY: 2,189 SQ.FT.
CROSSOVER ROOM ONLY: 1,242 SQ.FT.



The floor plan is not suitable for architectural/construction and is NOT covered under E&O. It is for visualization/layout purposes only.
© Excelsior Measuring Inc. 2024. All rights reserved for Excelsior Measuring Inc. Users shall not publish and distribute such material (in whole or in part) and/or incorporate it in other works in any form.

