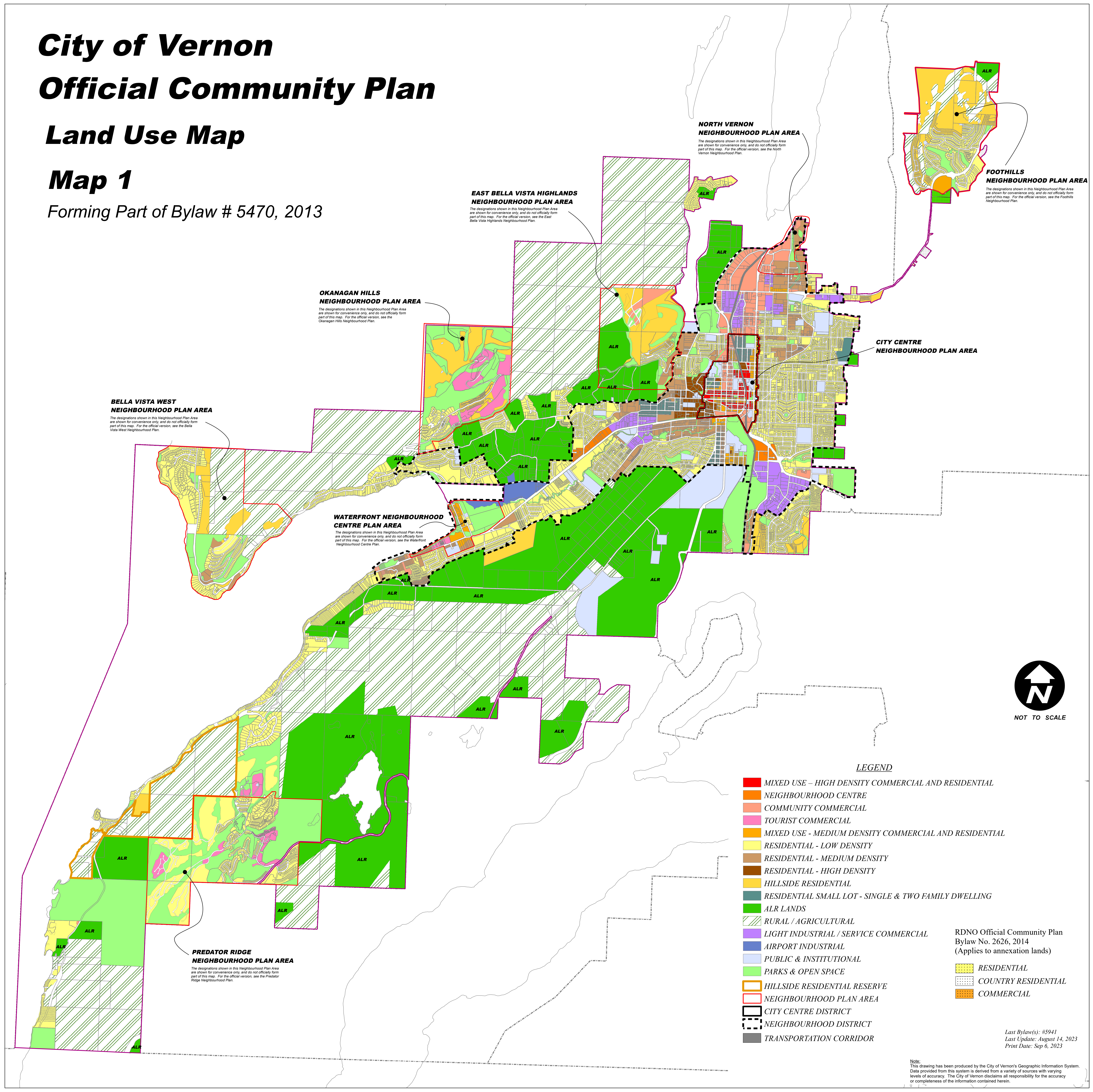


City of Vernon Official Community Plan Land Use Map

Map 1

Forming Part of Bylaw # 5470, 2013



- LEGEND**
- MIXED USE – HIGH DENSITY COMMERCIAL AND RESIDENTIAL
 - NEIGHBOURHOOD CENTRE
 - COMMUNITY COMMERCIAL
 - TOURIST COMMERCIAL
 - MIXED USE - MEDIUM DENSITY COMMERCIAL AND RESIDENTIAL
 - RESIDENTIAL - LOW DENSITY
 - RESIDENTIAL - MEDIUM DENSITY
 - RESIDENTIAL - HIGH DENSITY
 - HILLSIDE RESIDENTIAL
 - RESIDENTIAL SMALL LOT - SINGLE & TWO FAMILY DWELLING
 - ALR LANDS
 - RURAL / AGRICULTURAL
 - LIGHT INDUSTRIAL / SERVICE COMMERCIAL
 - AIRPORT INDUSTRIAL
 - PUBLIC & INSTITUTIONAL
 - PARKS & OPEN SPACE
 - HILLSIDE RESIDENTIAL RESERVE
 - NEIGHBOURHOOD PLAN AREA
 - CITY CENTRE DISTRICT
 - NEIGHBOURHOOD DISTRICT
 - TRANSPORTATION CORRIDOR

RDNO Official Community Plan
Bylaw No. 2626, 2014
(Applies to annexation lands)

- RESIDENTIAL
- COUNTRY RESIDENTIAL
- COMMERCIAL

Note:
This drawing has been produced by the City of Vernon's Geographic Information System.
Data provided from this system is derived from a variety of sources with varying levels of accuracy. The City of Vernon disclaims all responsibility for the accuracy or completeness of the information contained herein.

Last Bylaw(s): #5941
Last Update: August 14, 2023
Print Date: Sep 6, 2023